



U.S. Department of Energy
Office of Civilian Radioactive Waste Management



Office of Civilian Radioactive Waste Management Update

Presented to:

**Western Interstate Energy Board
High-Level Waste Committee**

Presented by:

**Alex Thrower
Office of Logistics Management**

**April 23, 2008
Tempe, Arizona**

Introduction

- **Program key milestones**
- **OCRWM releases**
- **Fiscal Year (FY) 2008 Office of Civilian Radioactive Waste Management (OCRWM) Program budget**
- **Transportation priority activities**
- **Summary**



Program Key Milestones

- **Design for license application complete- Nov. 2007**
 - Actual: December 1, 2007
- **License Support Network certification- December 2007**
 - Actual: October 19, 2007
- **Repository Supplemental Environmental Impact Statement (SEIS) Nevada Rail Corridor SEIS and Rail Alignment EIS- Summer 2008**
 - Actual: Drafts issued October 2007/hearings completed
- **License application submittal- June 2008**
 - Impact of \$108M FY 08 appropriations reduction addressed
 - Expect submittal to Nuclear Regulatory Commission (NRC) in June



Future Key Milestones

- **Start Nevada rail construction- October 2009**
 - Delayed – Inadequate funding
- **Repository construction authorization- September 2011**
 - Depends on NRC review period and decision
- **Operating license application submittal- March 2013**
 - Predicated on funding and construction schedule
- **Rail Line Operational- June 2014**
 - Delayed – 2016 is achievable only if adequate funding is provided
- **Begin receipt- March 2017 (best achievable date)**
 - Baseline schedule currently under evaluation due to FY 2007 and 2008 actual funding shortfalls and expected near term funding limitations
 - Firm date cannot be set until funding issue resolved



OCRWM Releases

- **Independent Assessments (on website)**
 - **Quality Assurance Management Assessment**
 - **Quality Assurance Programs**
 - **Engineering Processes**
- **Total System Life Cycle Cost**
 - **Draft revised to include current and constant dollars**
- **Final Supplemental EIS**
- **License application**
- **Fee Adequacy Determination**
- **Second Repository Report**
- **Interim Storage Report**





FY 2008 Budget Appropriations Summary

(dollars in millions)



	<u>FY 2007 Request</u>	<u>FY 2007 CR</u>	<u>FY 2008 Request</u>	<u>FY 2008 Approp.</u>
Yucca Mountain	\$ 355.4	\$ 315.5	\$378.4	\$267.1
Transportation	67.7	28.6	15.0	18.3
Prog Mgmt & Integration/Prog Direction	121.4	101.8	101.1	101.0
TOTAL PROGRAM	544.5	445.9	494.5	386.4
Nuclear Waste Fund	156.4	99.0	202.5	187.3
Defense Nuclear Waste Disposal	388.1	346.9	292.0	199.1



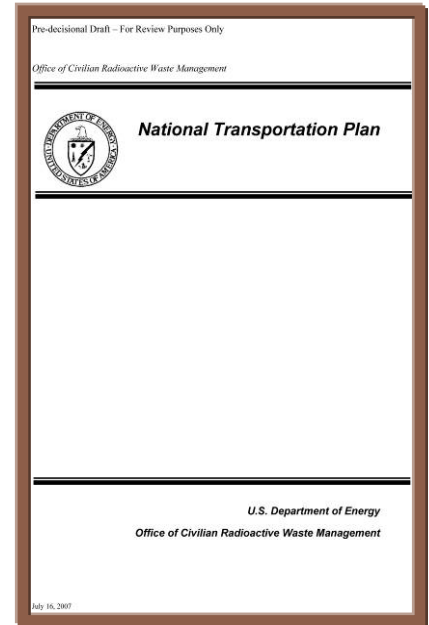
Transportation Priority Activities

- **Issue the National Transportation Plan (NTP)**
- **Finalize Draft Nevada Rail Corridor SEIS and Rail Alignment EIS**
- **Continue dialogue on routing**
- **Address perceptions of spent nuclear fuel transportation risk**
- **Expand benchmarking efforts to identify best practices in the private sector and abroad**



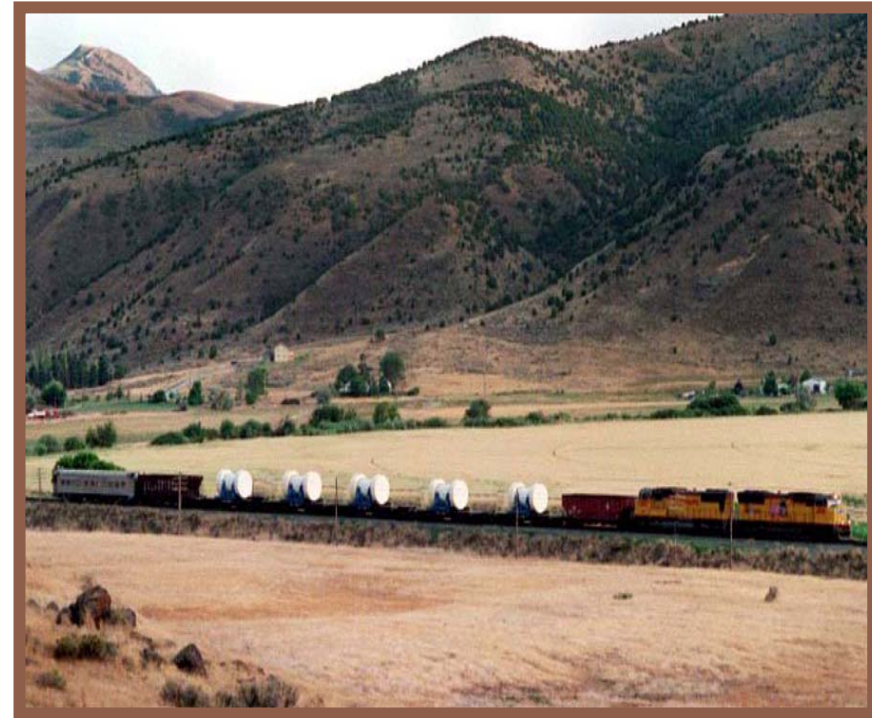
Development of the NTP

- **Developing the NTP is one of four strategic Program objectives**
- **Elements of the plan include**
 - Requirements
 - Infrastructure development
 - Stakeholder involvement
 - Operations planning
- **Status:**
 - Impacts of FY 2008 funding and future profiles are being incorporated
 - NTP will be published for public comment when integrated planning baseline decisions are finalized



Nevada Rail Status

- **October 2007 - Issued Draft Nevada Rail Corridor SEIS and Draft Rail Alignment EIS for public comment**
 - Public comment period closed on January 10, 2008
 - Over 1000 comment documents were received from the public and stakeholders
- **Summer 2008 - Issue Final Nevada Rail Corridor SEIS and Rail Alignment EIS**
 - Comments provided on the drafts will be addressed in the Final Nevada Rail Corridor SEIS and Rail Alignment EIS



Nevada Rail Status

(continued)

- **OCRWM plans to publish a Record of Decision on the Nevada Rail Alignment no earlier than 30 days after publication of final EIS**
- **Preliminary design and detailed characterization are scheduled to begin in 2009 if funding allows**
 - **Rail line is intended to be operational prior to opening of the repository**



Objectives of Routing Process

- **Continue collaborative process with stakeholders**
- **Address National Academies' recommendations**
 - **The Department of Energy (DOE) should continue to ensure effective involvement of states and tribal governments in its decisions on routing**
 - **DOE should identify suite of preferred rail and highway routes as soon as practicable to support state, tribal, and local planning**
- **Transportation External Coordination Working Group (TEC) Routing Topic Group formed analytical groups to look at possible ways to route shipments from 12 sites in four regions to the proposed railhead at Caliente, Nevada**
 - **Sites include commercial reactor and DOE sites**
 - **The results will be presented at a future TEC meeting**



Section 180(c) Policy

- Revised proposed policy was issued in the July 23, 2007 *Federal Register*
 - Comment period closed on January 23, 2008
 - Received over 50 comment documents from states, state regional groups, tribal governments, affected units of government, and citizens
- DOE has begun to analyze the comments and will factor them into the development of a pilot program
- DOE will issue another revised proposed policy that incorporates lessons learned from the pilot program and considers the comments received on the July 23, 2007 revised proposed policy *Federal Register* Notice (FRN)
- In 2008, DOE plans to publish a supplement to the *FRN* addressing a process to allocate available funds to tribes



Operations Planning

- **Current operations planning efforts include:**
 - **Preparation of Transportation System Operations Plan**
 - **Assessing utility near-site/short line railroad infrastructure in concert with the Federal Railroad Administration**
 - **Performing regulatory analysis and requirements development**



Spent Nuclear Fuel Transportation

- **The National Academies' Committee found that:**
 - **No fundamental technical barriers exist to the safe transport of spent nuclear fuel and high-level radioactive waste in the U.S.**
 - **U.S. regulations are adequate to ensure package containment effectiveness over a wide range of transport conditions**
- **To effectively communicate with stakeholders about spent nuclear fuel transportation, DOE has proposed revising the TEC Communication Topic Group to improve communication methods**



Benchmarking Effort

- **Initial study produced a best practices report identifying recommendations that were common across partner organizations**
 - Consolidated experience and recommendations from past DOE shipping campaigns
 - Partners included:
 - ◆ Waste Isolation Pilot Plant
 - ◆ Naval Nuclear Propulsion Program
 - ◆ Foreign Research Reactor Program
- **OLM has begun to evaluate integrated domestic and international commercial radioactive materials transport operations**
 - Published AREVA, NC report in March 2008



Summary

- **The \$108 million reduction in FY 2008 funding has impacted employment levels and work scheduled for this year**
- **OCRWM is still revising its integrated baseline to quantify the impacts**
- **Overall schedules will be delayed as a result of funding reductions in FY 2007 and FY 2008, but transportation planning is still a priority**
- **Collaboration with key stakeholders is still the cornerstone of transportation system development**

