

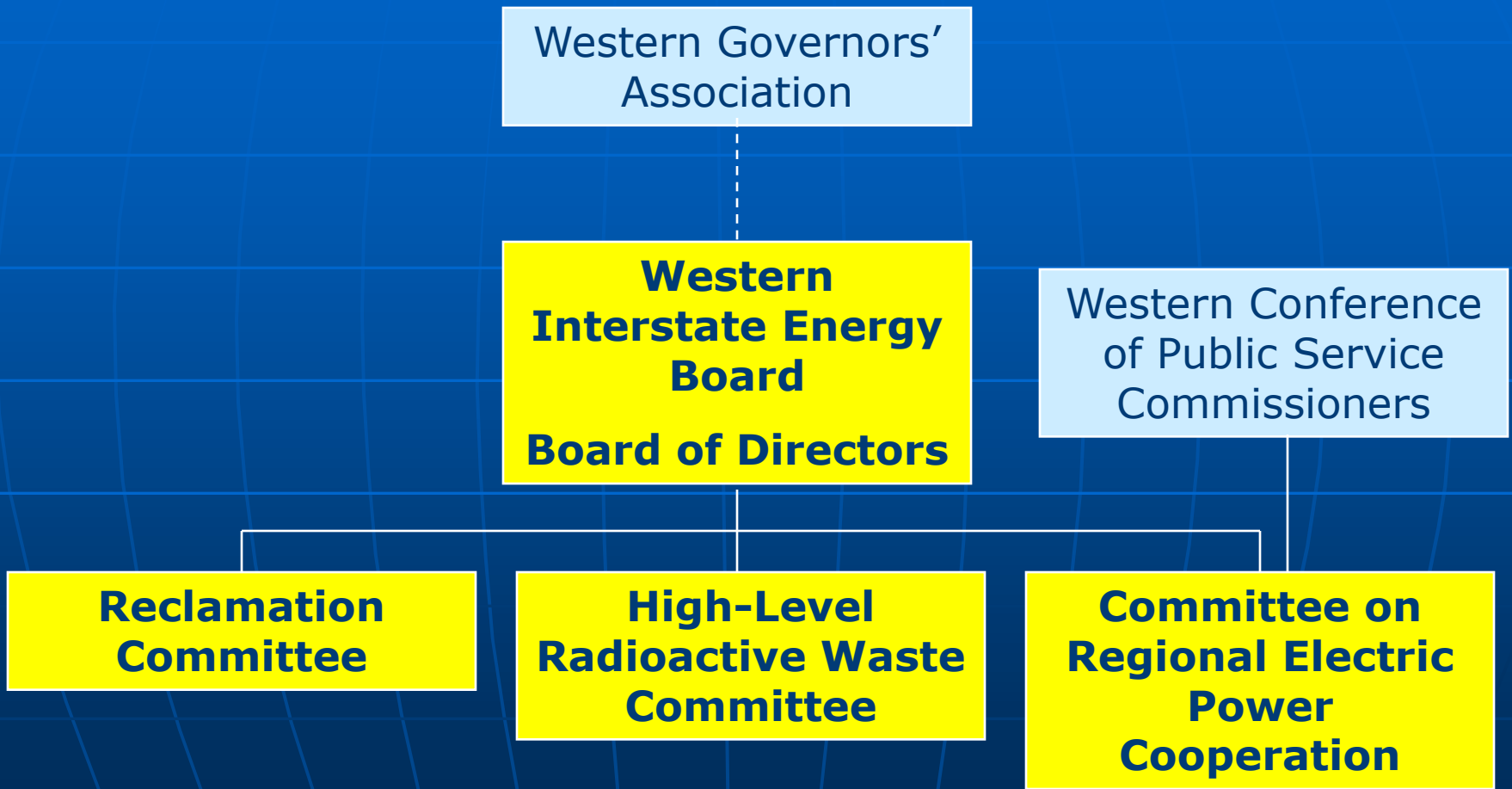
Board and Committee Activities Financial Report

Doug Larson
Executive Director

Overview

- Support of WGA
 - WREZ project
 - Role of federal gov't in transmission for renewables
- Board priorities
 - Meeting of resource planners
 - White paper on nuclear power
 - Transmission permitting

Board Structure



Energy Minerals Reclamation Committee

- Joined with IMCC and AMLPA on transition paper for Obama Administration on OSM
- Obama 2010 budget proposal to eliminate AML funds for “certified” state – WY, MT
- Federal funds for regulatory grants looking good
- Will meet when new OSM Director in office

CREPC

- Co-sponsored Feb 24-25 resource planning meeting
- FERC market monitoring calls
- Staff
 - Helped organize WECC Feb 2-3 long-term planning seminar
 - Exploring transmission permitting
 - Tracking Western Wind and Solar Integration Study

HLW Committee

- OCRWM support ending
 - From \$250k to \$102k in FY 09 to \$0 in FY 10
 - DOE – EM support of WGA declining
- Oct. 31, 2008 DOE letter
 - EM is a “mature, steady-state program” that no longer needs to work as closely with states.
 - OCRWM, “does not require the intensity of planning, preparation and stakeholder outreach previously envisioned.”
- WGA/WIEB response (Dec. 1, 2008)

OCRWM “National Transportation Plan”

- Indicative of lack of progress
 - Only 28 pages.
 - Consultation = Report review & comment.
 - Objectives = Meet regulations (not best practice; not public acceptance)
- SRG comments will be filed
 - No DOE response; no posting of comments

Proposed letter to Sec. Chu (with copies to delegations) from all regional programs (e.g., WIEB) or from Western Governors

- Do not abandon the “institutional infrastructure” for fed-state consultation.
- Provide direction for state consultation at Secretary level, not sub-office level
- Integrate federal - state consultation on all DOE transportation activity
- Fund state participation during reconsideration of SNF/HLW program