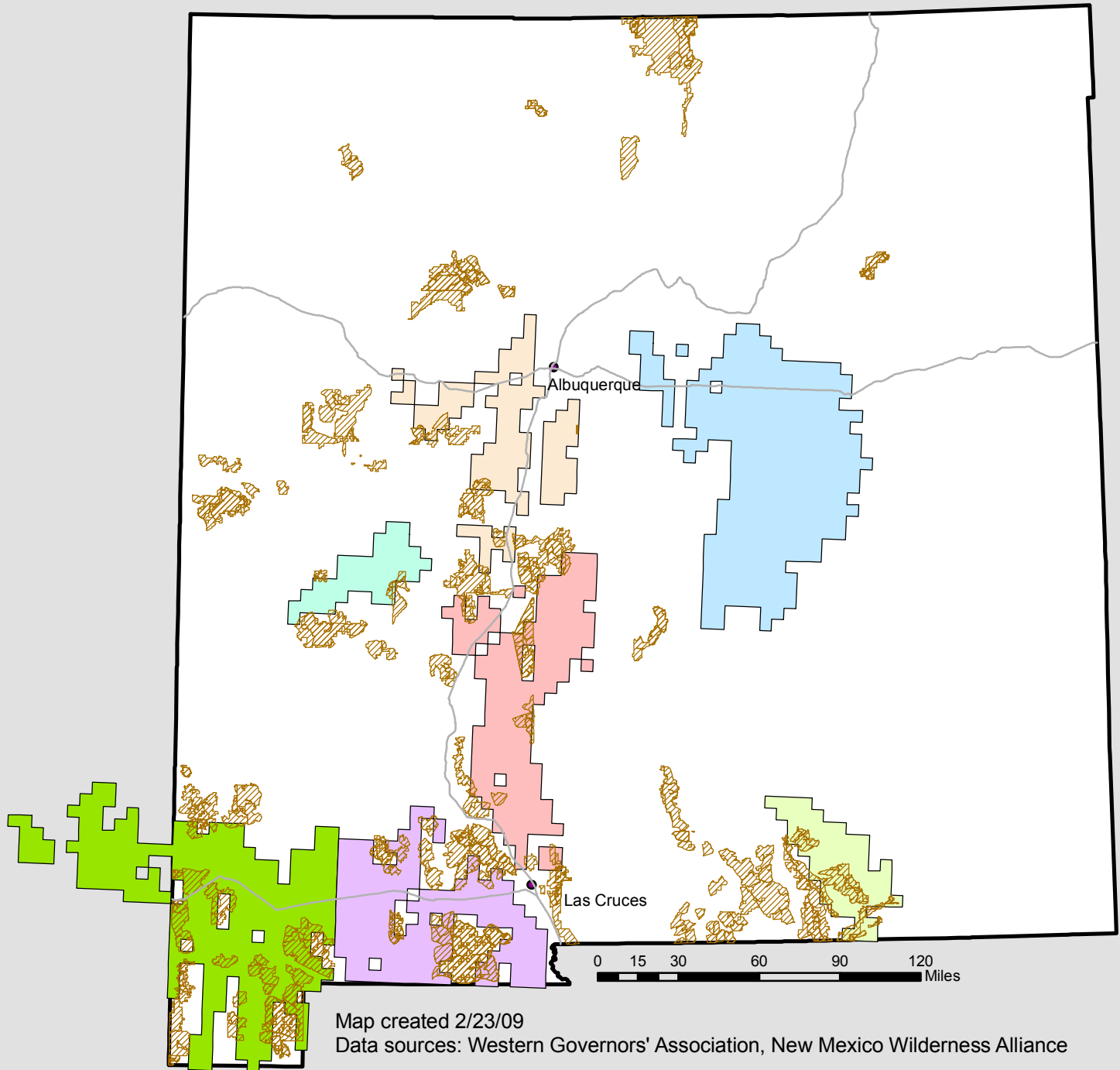

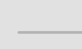
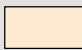
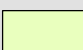
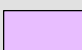
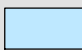


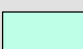


# Intersection of Western Governors' Association "Qualified Resource Areas" and Citizens' Proposed Wilderness – New Mexico



 Citizens' Proposed Wilderness       Interstate Highway

## Qualified Resource Areas

 NM_CT_2811	 NM_SE_2086	 NM_SO_6155
 NM_EA_11977	 NM_SC_6161	 NM_SW_9724
	 NM_WE_1803	

