



# *Regional Transmission Expansion Planning in the Western Interconnection*

---

Western Governors' Wildlife Council Meeting

Denver, CO

December 2, 2010

Bradley Nickell – Director of Transmission Planning

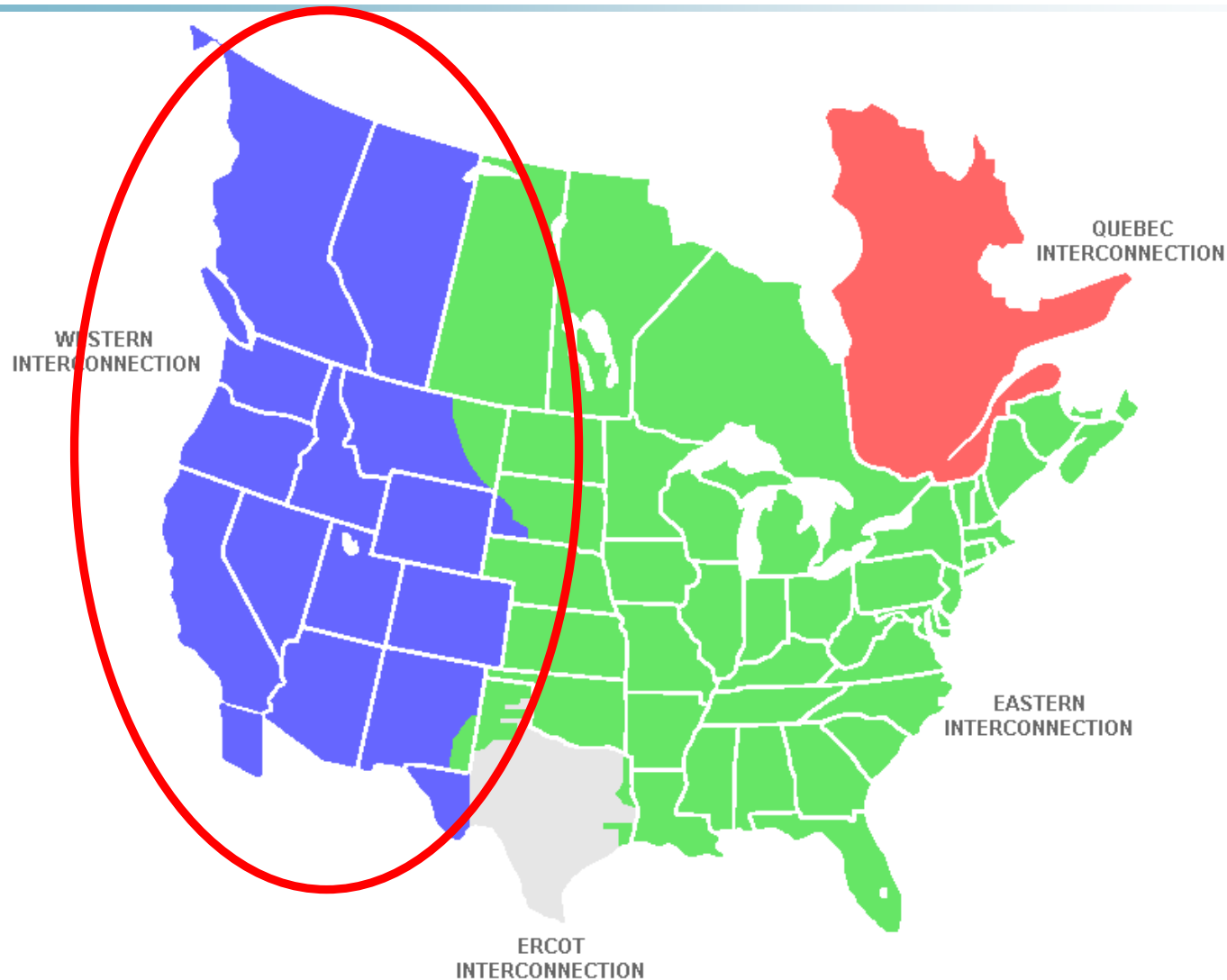
Gary Graham – Western Resource Advocates, SPSG Vice-Chair

# *What are we planning for?*

---

- Identification of future infrastructure needs to
  1. Serve the expected load reliability
  2. Meet public policy directives
  3. Minimize cost and environmental impact
- Transmission planning – identify future transmission capacity needs given a future set of loads and resources
  - It's all about resource planning

# *Western Interconnection*



# *Regional (Interconnection-wide) Transmission Planning In the West*

---

- Transmission Expansion Planning Policy Committee (TEPPC)
  - Leads transmission expansion studies for Western Interconnection (WI)
  - Perform transmission congestion studies
    - Quantify transmission congestion
    - Report other impacts – fuel, CO<sub>2</sub>, RE, cycling, etc.
    - Identify potential congestion solutions
    - Estimate costs – Variable and capital cost comparisons
  - Create Regional Transmission Plans for the WI

# *Expansion of TEPPC Activities*

---

- Opportunity through American Recovery and Reinvestment Act (ARRA)
- DOE Funding Opportunity Announcement (FOA) in 2009
  - DOE awarded WECC \$14.5 million over four years for expanded transmission planning in the WI
  - Coordinated with related activities led by the Western Governors' Association (WGA)
  - WECC project known as Regional Transmission Expansion Planning (RTEP) project

# *RTEP Project*

## *What have we been asked to do?*

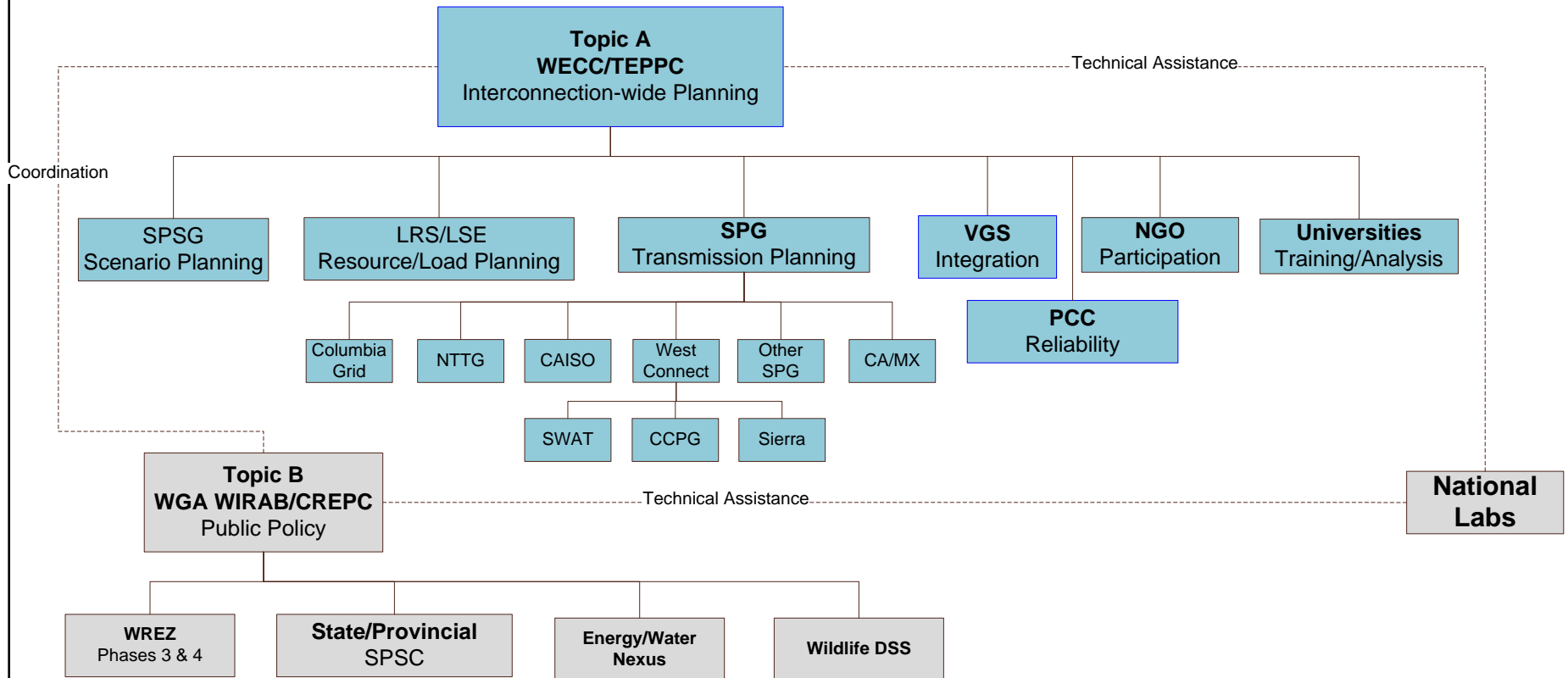
---

Expand the breadth and depth of WECC's existing Regional Transmission Planning process (TEPPC)

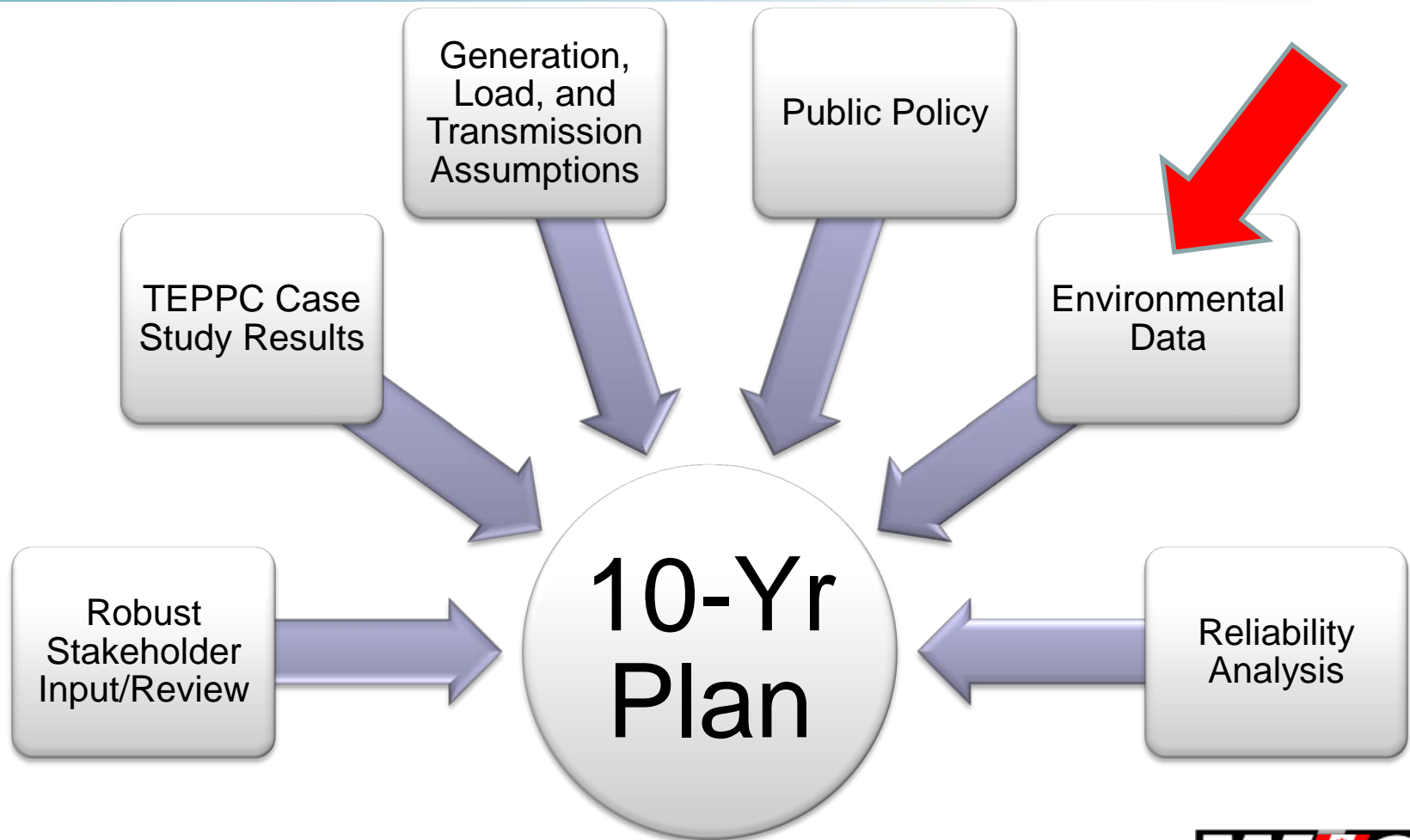
- Deliverables (2011)

- Create a multi-constituency Steering Group
- 10-Year Regional Transmission Plan
- 10-Year Coordinated Reliability Plan
- Acquire new long-term planning tool(s)
- Create planning engineer training materials

# Organizations Involved in RTEP



# 10-Year Regional Transmission Plan





# *Environmental Data*

---

- First-time environmental data has been brought into the regional transmission planning process
- SPSG Environmental Data Task Force (EDTF) leading the way
- Goal is reduce opposition to environmentally responsible transmission development by using environmental and cultural data early in the planning process

# *EDTF – Near-term Objectives*

---

- Review some of the existing transmission projects in the current 10-Year Plan using existing data sources
  - Will incorporate the Montana Decision Support System and perhaps other state systems
  - Report findings in the 10-Year Plan
- ICF is providing support to the EDTF

# Questions

---

**Bradley Nickell**

**Director of Transmission Planning**  
**Western Electricity Coordinating Council**  
615 Arapen Drive, Suite 210  
Salt Lake City, Utah 84108-1262  
801.455.7946  
[bnickell@wecc.biz](mailto:bnickell@wecc.biz)



**All information on the RTEP project can be found on the WECC website at**

**<http://www.wecc.biz/Planning/TransmissionExpansion/RTEP/Pages/default.aspx>**