

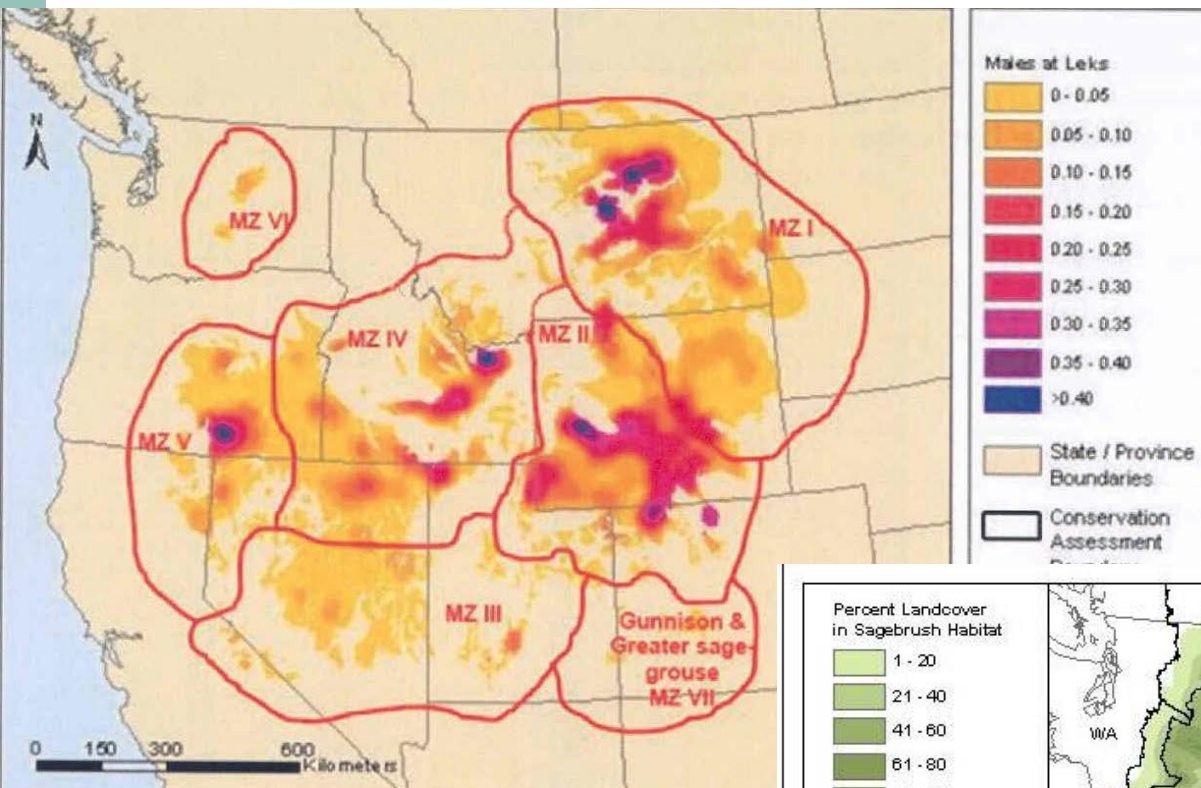
Sage Grouse: Western Governors' Priorities



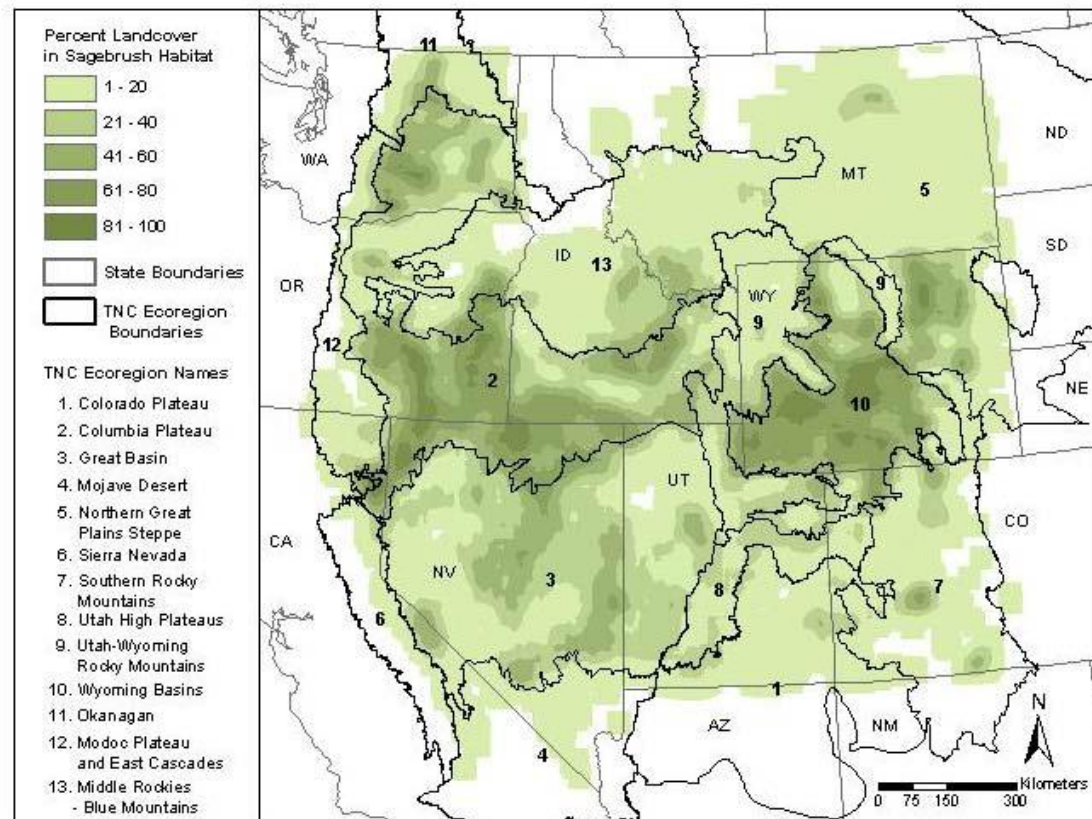
WESTERN
GOVERNORS'
ASSOCIATION

Madeleine West, Program Director

Sage grouse distribution



Sagebrush distribution



USFWS' 2010 Listing Decision

- Warranted but precluded
- A primary threat – habitat fragmentation from energy development
- Revisit decision in 2015
- Range-wide decision, not state-by-state

Western Governors' Leadership

- Policy Resolution
- State/Federal Sage Grouse Task Force
 - Co-chaired by Governor Mead, Governor Hickenlooper & BLM Director Pool
 - Get everyone to do their part
 - Improve state understanding of USFWS objectives
 - Improve state input into BLM/USFS RMP revisions
 - Maintain state management of species

Next Steps

- What more information would this group like?
- What can this group do to support Governors' policy?