



Western Governors' Association

Western Governors' Wildlife Council Meeting

November 3, 2011

WGWC Accomplishments to Date

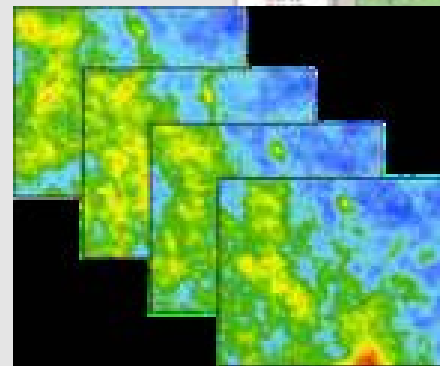
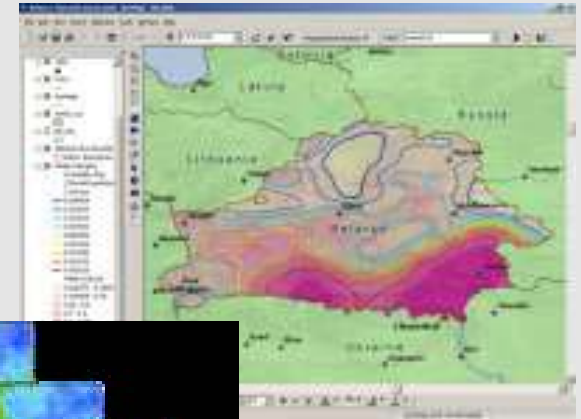
**John Harja, Chair &
John Mankowski, Vice-Chair
Western Governors' Wildlife
Council**





Western Governors' Wildlife Council Vision

- Identify key wildlife corridors and crucial habitats, and develop and coordinate policy options and tools for preserving those landscapes.
- Provide a user friendly online tool for parties to access consistent wildlife information across political boundaries to better inform land use planning.



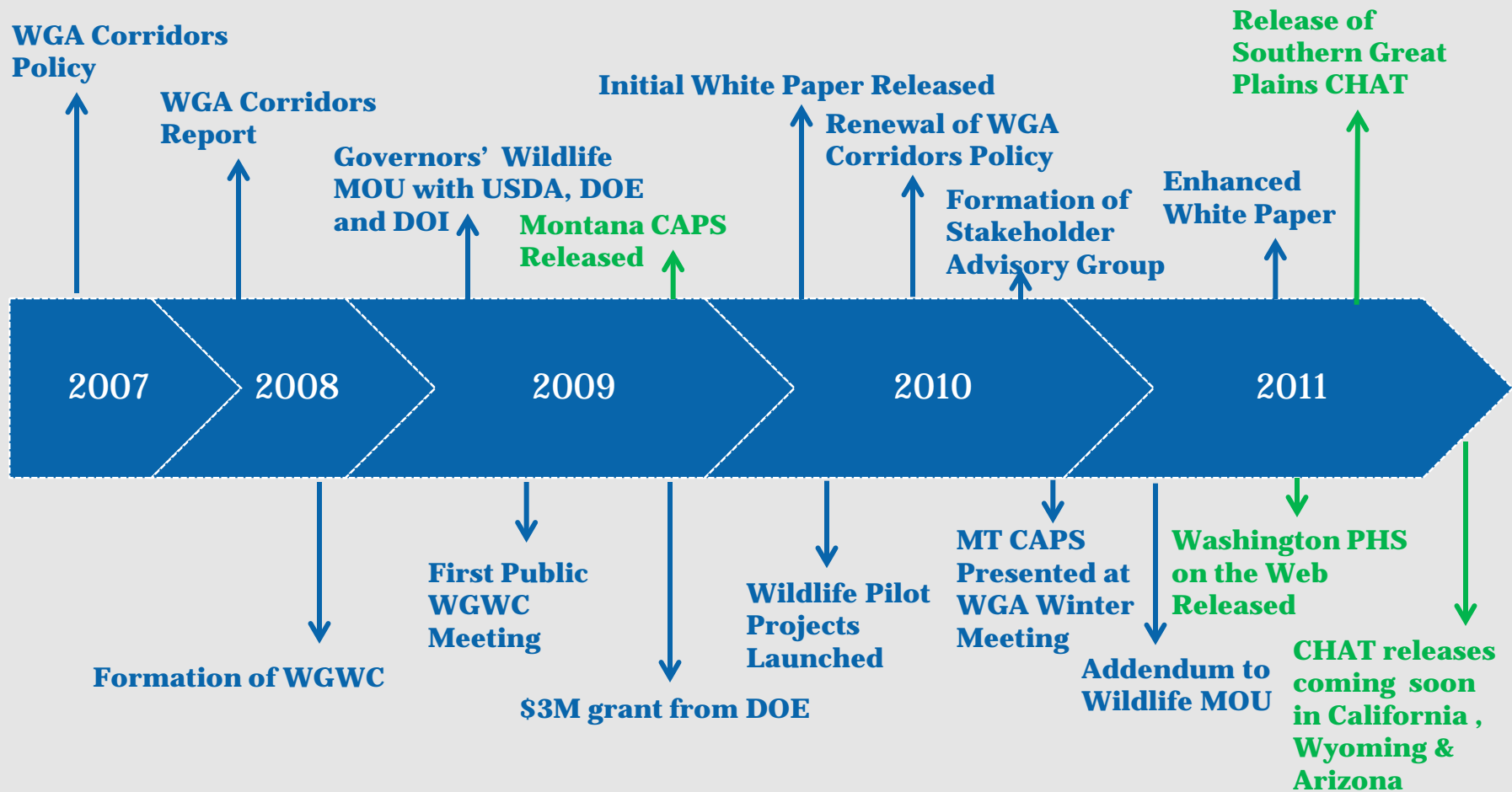


WGWC Objectives

- Improve analysis of landscape-scale energy, land use and transportation projects as well as land conservation
- Integrate customers and other stakeholders into the development, maintenance and roll out of the CHAT both at the state and regional level.
- Seek widespread use of CHAT so that decision makers at all levels rely on it to better inform planning, while providing healthy and productive landscapes.
- Ensure federal, state and local agencies consult CHAT and integrate its wildlife information early into land management, energy/transmission or transportation planning processes.
- Seek resources for internal and external state agency efforts to develop and maintain the CHAT and to support regional compatibility efforts.

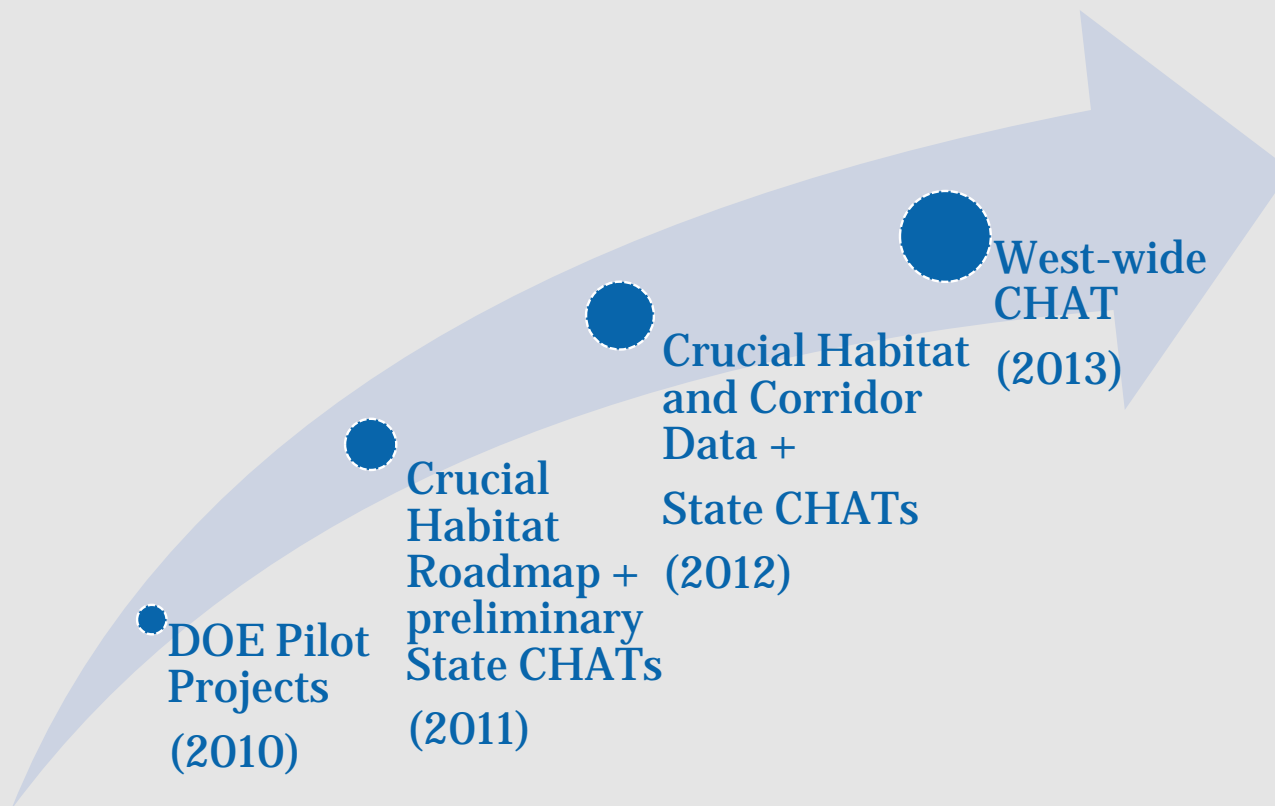


WGWC Accomplishments to Date





From Pilots to Western Wildlife Crucial Habitat Assessment Tool





Looking Ahead: 2011 - 2013

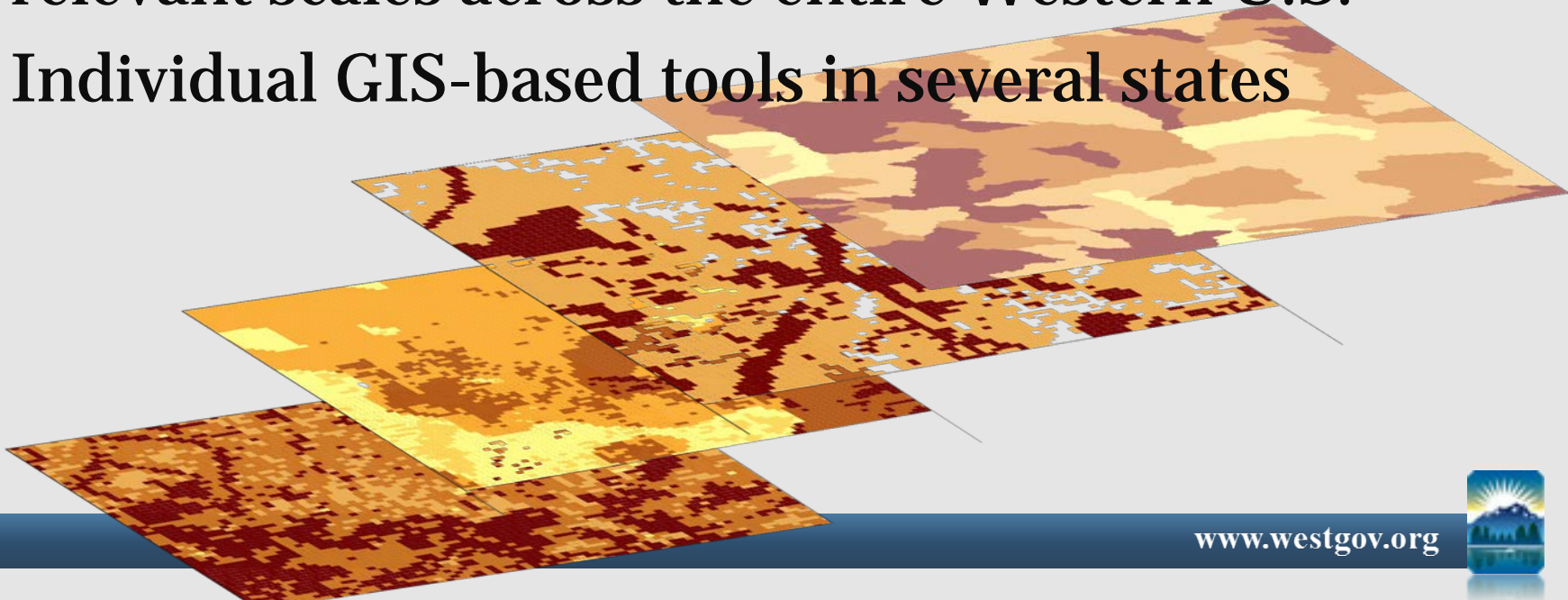
- **Present - October 2012**
 - States will complete development of Tier 1 data
 - States will apply crucial habitat definitions to data in a compatible manner
 - States will continue to build and improve upon individual state CHATs, as desired
 - States will advise the WGWC on elements of regional CHAT development
- **November 2013 – December 2013**
 - Development and public display of crucial habitat and corridor information in a regional CHAT





Success in 2013

- Identification of crucial habitat for fish and wildlife, and important wildlife corridors across Western states
- Regional CHAT displaying wildlife information at relevant scales across the entire Western U.S.
- Individual GIS-based tools in several states





Available State CHATs

- Montana Crucial Areas Planning System (CAPS)
- Washington Priority Habitat Species (PHS On Line)
- Southern Great Plains CHAT – Lesser Prairie Chicken
- Wyoming Interagency Spatial Database & Online Management System (WISDOM)
- California Areas of Critical Conservation Emphasis (ACE)
- Arizona's HabiMap

