



# Western Governors' Association

Western Governors' Wildlife Council Meeting

November 3, 2011

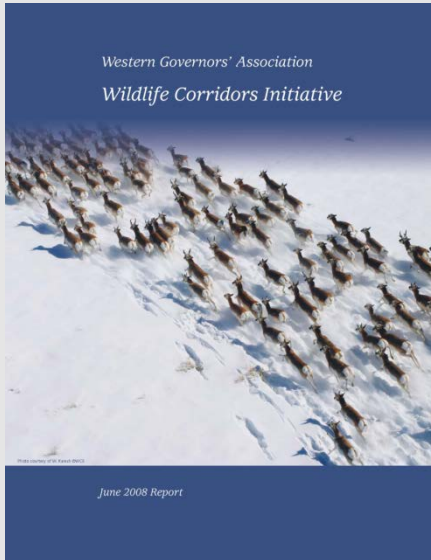
## Integrating Wildlife Information into WECC's Planning for Generation

**John Harja**  
**Utah Governor's Office &**  
**Chair, Western Governors'**  
**Wildlife Council**





# Presentation Overview



- **Western Governors' Wildlife Council**
  - Identification and conservation of crucial wildlife habitats and corridors in West
- **Regional Transmission Expansion Planning Process**
  - Analysis of transmission requirements under future scenarios





# Western Governors' Wildlife Council Crucial Habitat Assessment Tools

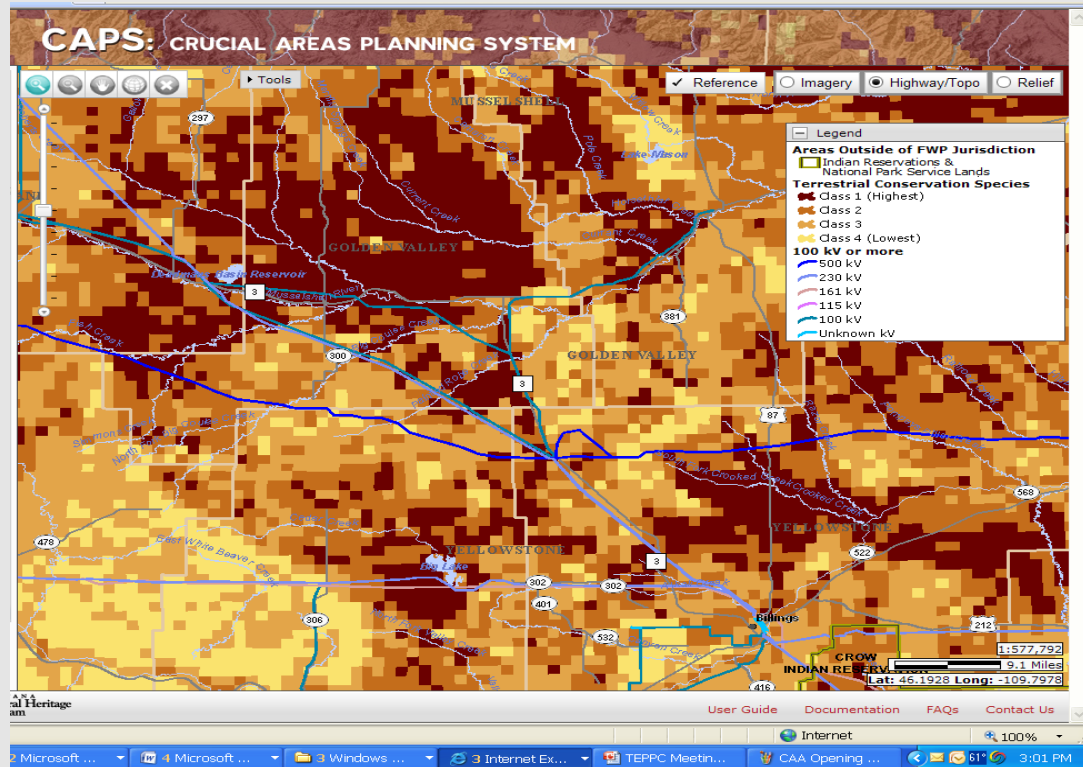
CHATs that are presently available :

- Montana Crucial Areas Planning System
- Southern Great Plains CHAT (Lesser Prairie Chicken only)
- Washington Priority Habitat and Species System

CHATs expected by early 2012:

- Arizona
- Wyoming
- California

2013: West-Wide CHAT (17 WGA states)



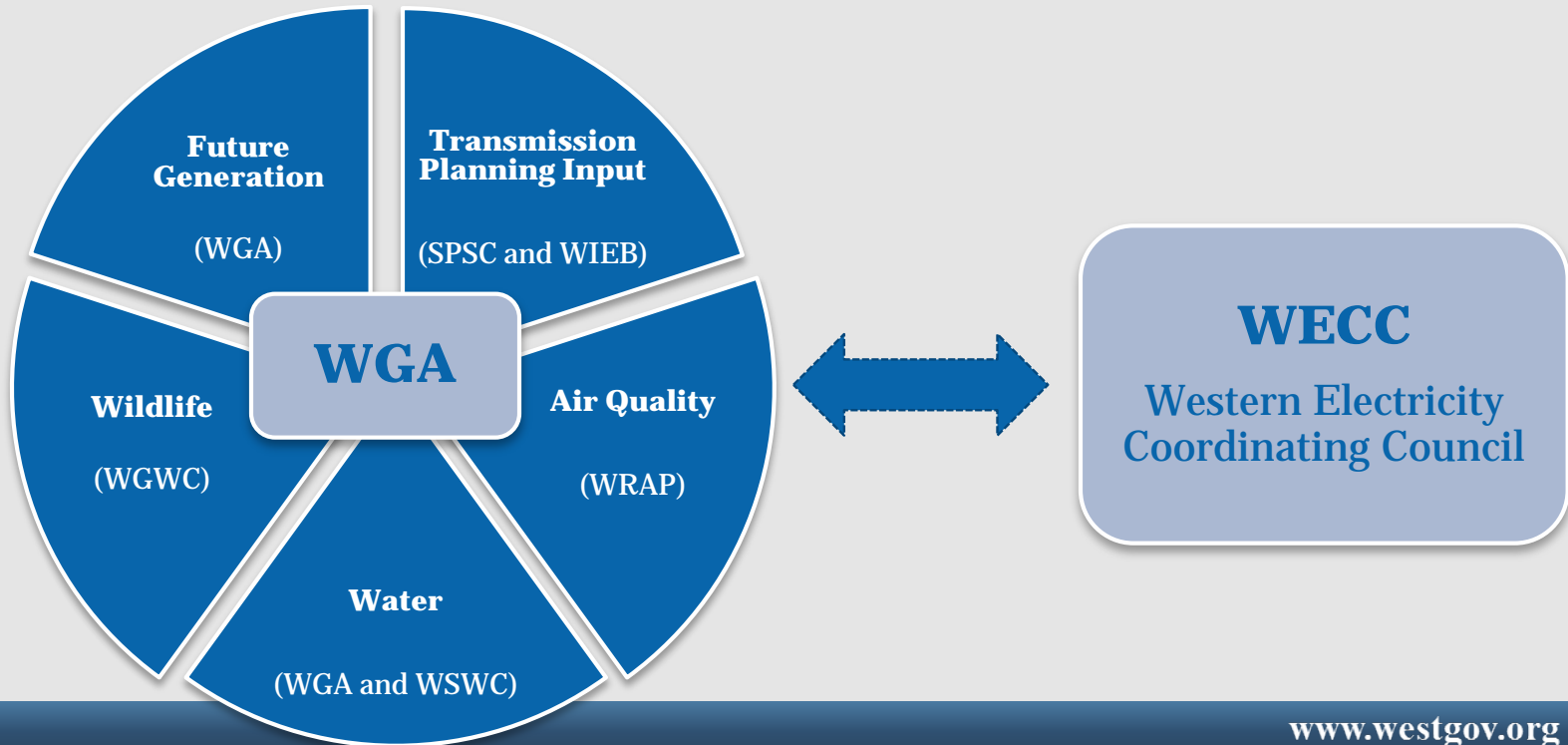


# RTEP and Wildlife

- WGA is working with WECC to incorporate new policy drivers into WECC's planning processes.
- The goal is to help projects more easily proceed from planning to development by increasing early considerations of wildlife, water and air quality information.

Topic B - Integrated Policy Input/Analysis

Topic A – Technical Analysis



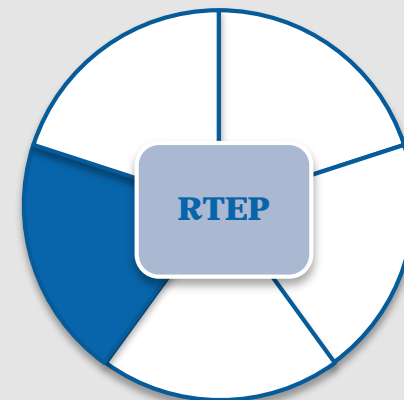


# WGA Wildlife Activities

*How can policy balance siting of renewable energy facilities and transmission lines with conserving sensitive wildlife areas?*

- **Ensure states develop GIS-based Crucial Habitat Assessment Tools (CHATs)** for wildlife information across political jurisdictions
- **Provide input into decisions relating to future generation assumptions**, based on wildlife sensitivity information from state CHATs.
- **Work with the National Renewable Energy Lab** to develop examples of spatial mapping of the overlap between renewable resource zones and areas with crucial habitat for wildlife and use this information develop a protocol with WECC as to how wildlife information is used in transmission planning.

## Wildlife

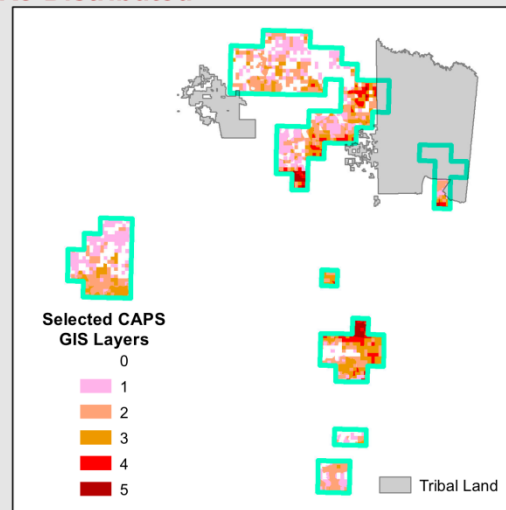
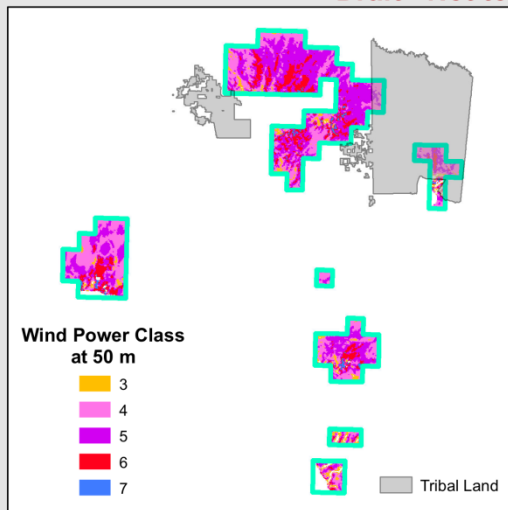




# Overlaying Wildlife Information with Generation Resources

## Montana NE Qualified Resource Area and Wildlife

**Draft - Not to be Re-Distributed**

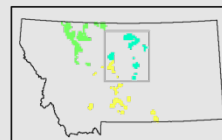


With assistance from the Montana Fish, Wildlife & Parks (MFWP), the following five layers of its Crucial Areas Planning System (CAPS) were selected as an example to demonstrate the potential impacts on sensitive wildlife areas from wind resource development. <http://fwp.mt.gov/gis/maps/caps/>

Large Block (unfragmented habitat) value of 1  
Prairie Sage Grouse, PG value of 4 or 5 and any PG SageGr = 3  
Terrestrial Conservation Species value of 1 or 2  
Conservation Species value of 1 or 2  
Species Richness value of 1 or 2

Canadian and tribal lands were not included in this example because MFWP does not have jurisdiction over these areas.

MT_NE QRA, Total Area = 1,014,838 acres							Total	Total
Num. Selected CAPS Layers	Wind Power Class at 50m					Percent	Acres	
	3	4	5	6	7			
Tribes	0.40%	4.03%	2.18%	0.42%	0.05%	7.07%	71,793	
0	1.32%	9.24%	11.89%	2.33%	0.10%	24.89%	252,569	
1	1.24%	10.05%	8.49%	2.11%	0.39%	22.29%	226,258	
2	1.92%	8.44%	8.71%	4.81%	0.68%	24.57%	249,382	
3	0.49%	4.60%	5.89%	2.63%	0.33%	13.95%	141,554	
4	0.54%	2.10%	2.47%	0.10%	0.00%	5.21%	52,886	
5	0.13%	1.11%	0.72%	0.05%	0.00%	2.01%	20,396	
Total %	6.05%	39.57%	40.37%	12.46%	1.56%	100.00%		
Total Acres	61,401	401,554	409,652	126,419	15,812			1,014,838



Montana Qualified Resource Areas as determined by the Western Governor's Association Western Renewable Energy Zones Initiative in 2009





# Value of Integrating Wildlife Information

- It can be used to conceptually place renewable generation in the appropriate QRA's for the respective scenarios
- It can be used to assess the viability of any respective scenario
- It can ultimately guide developer decisions
- It is critical that transmission plans fully include wildlife information
- It can inform the work of the EDTF



# Conclusion

Western Governors' Wildlife Council vision:

- Identify and display key wildlife corridors and crucial wildlife habitats in the West.
- Develop and coordinate policy options and tools for conserving those landscapes.

RTEP is a key step to improving incorporation of fish and wildlife into regional energy planning decisions

